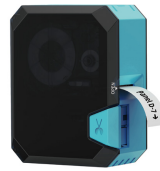




## OPS-2000 XGS PRO



- Automatic PON-ID detection including OLT PON-ID, ODN class, Tx power, power level and ODN link pass/fail per ITU-T
- ONU/ONT ID and serial number, ONU status identification(Including detection of Offline ONU and NO ONU)
- PON resource check and mapping function
- Support 20dB OTDR and FLM function
- Downlink 1490/1577nm and uplink 1270/1310nm power measurement and judgement
- Compatible with GPON, EPON, XG(S)-PON, 10G EPON and automatic recognition of network types
- Bluetooth connection with phone app
- Low power consumption for extended continuous use, support 20W quick charger
- Support generating test reports on site
- Optional printer, supports assisting in app development to print test labels

Items	Specifications
Applicable Network	XG(S)-PON, GPON, 10G-EPON, EPON (Support automatic recognition of network types)
Test Mode	Series connect: Two ports pass through mode
Insertion loss	<1.5dB insertion loss
PON Data Parsing	OLT information: OLT PON ID, ODN class, Tx power ONU information: ONU ID, ONU SN
Power Measurement	Downlink: 1490nm and 1577nm Uplink: 1270nm and 1310nm
OTDR and FLM	Wavelength: single 1650nm or 1625nm or 1550nm, support live fiber test
	Dynamic range: 20dB; Deadzone: 1m/4m
Optical Interface	SC/APC*2
Charging Port	USB Type-C charging port 20W quick charge
Power Supply	5000mAh lithium battery; Input: 5V/2A
Display	5 inch touch color screen
Wireless	Bluetooth connection with Android phone app
Data Storage	16G TF Card
Working Temp	-10°C~50°C
Humidity	5%~95%(no condensation)
Dimension	195×141×44mm
Weight	940g

**Notes:**

The OLT information extraction needs to be activated in GPON OLT according to ITU-T G.984.3 Amd3



Let's go in the grand way!