

# P5000i Digital Analysis Microscope

## Automated Fiber Inspection and Pass/Fail Analysis



### Key Benefits

- Inspect and certify fiber end face quality at the push of a button, making your technicians instant fiber experts
- Ensure physical layer performance by guaranteeing fiber connectivity meets industry standards
- Eliminate confusion with fast, easy, and objective testing
- Use an intelligent scope to certify fiber end face quality with your existing JDSU test platform
- Let your technicians get it right the first time; drive best practices, improve quality of work, and optimize their workflow
- Ensure lifetime connections and protect network investments by preventing damage to fiber components and equipment

### Key Features

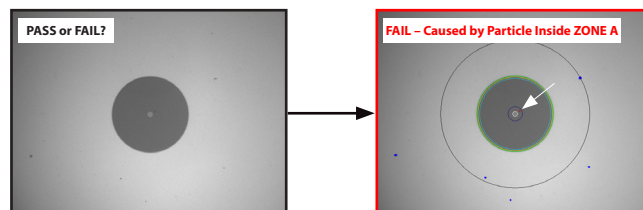
- **Repeatable Pass/Fail analysis** eliminates subjective guesswork from the measurement process
- **User-selectable acceptance profiles** allow certification to any acceptance criteria
- **Includes FiberChekPRO™** software for analysis and reporting with PC/laptop
- **Automatic Image Centering** ensures the fiber in always on the center of the screen
- **Detailed report generation** to certify and document results
- **Dual Magnification** (200X and 400X) functionality provides high level and detailed inspection and analysis
- **Magnification toggle button** allows easy switching in both live and analysis views
- **Accepts FBPT series tips** for comprehensive support for all connector types used in today's network
- **Ergonomic Focus Control Wheel** enables user to optimize the focus quality with precision and ease

The #1 cause for troubleshooting in optical networks is contaminated fiber connectors. To address this problem, the IEC has developed a standard for acceptable fiber end-face quality. Certifying compliance to this standard can be a time-consuming, complex, and subjective procedure.

The P5000i is a digital handheld microscope that automatically inspects and certifies the end faces of fiber connectors according to industry standards and specifications. This digital microscope provides instant Pass/Fail results at the push of a button; eliminating subjective and time-consuming guesswork.

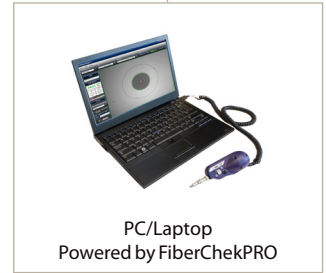
Compatible with multiple platforms, including T-BERD®/MTS-2000/4000/5800/6000A, HST-3000, and laptop/PC, the P5000i provides fast, repeatable analysis that easily integrates into existing test procedures. The world's leading manufacturers, installers, and service providers already rely on JDSU to certify their fiber connectors. Whether tested on the production line or in the field, the P5000i gives any technician that handles fiber the same capability in the palm of their hand.

### Eliminate the guesswork with objective testing



### The world's most versatile Pass/Fail analysis solution

The P5000i works on the JDSU test solutions that users already rely on daily for essential testing so that users can guarantee connector compliance to industry standards with a fast, repeatable analysis that easily integrates into their existing test procedures. Easily connect with a T-BERD/MTS-2000/4000/5800/6000A, HST-3000, or laptop/PC via USB without the need for any additional adapters required.



### Specifications

#### General Technical (Typical at 25°C)

Weight	110 g (3.88 oz)
Dimensions (w × h × d)	140 x 46 x 44 mm (5.5 x 1.8 x 1.7 in)
Low Mag Field-of-View (FOV)	Horizontal: 740 μm Vertical: 550 μm
High Mag Field-of-View (FOV)	Horizontal: 370 μm Vertical: 275 μm
Live Image	640 x 480 fps
Connector	USB 2.0 (backwards compatible to USB 1.1)
Cord length	183 cm (6 ft)
Camera Sensor	2560 x 1920, 1/2.5-in CMOS
Particle Size Detection	<1 μm
Light Source	Blue LED, 100,000+ hour life
Lighting technique	Coaxial
Power Source	USB Port
Certification	CE
Warranty	1 yr

#### Ordering Information

Part Number	Description
FBP-P5000i	P5000i Digital Analysis Probe w/FiberChekPRO
FBP-SD101	Kit: P5000i w/FiberChekPro, 4 inspection tips, case
FBP-SD103	Kit: P5000i and MP-60 w/FiberChekPro, tips, adapters, case
FBP-SD113	Kit: P5000i and MP-80 w/FiberChekPro, tips, adapters, case
FBP-MTS-101	Kit: P5000i w/FiberChekPro, 7 inspection tips, case

### Test & Measurement Regional Sales

<b>NORTH AMERICA</b> TEL: 1 866 228 3762 FAX: +1 301 353 9216	<b>LATIN AMERICA</b> TEL: +1 954 688 5660 FAX: +1 954 345 4668	<b>ASIA PACIFIC</b> TEL: +852 2892 0990 FAX: +852 2892 0770	<b>EMEA</b> TEL: +49 7121 86 2222 FAX: +49 7121 86 1222	<a href="http://www.jdsu.com/test">www.jdsu.com/test</a>
---	--	---	---	--