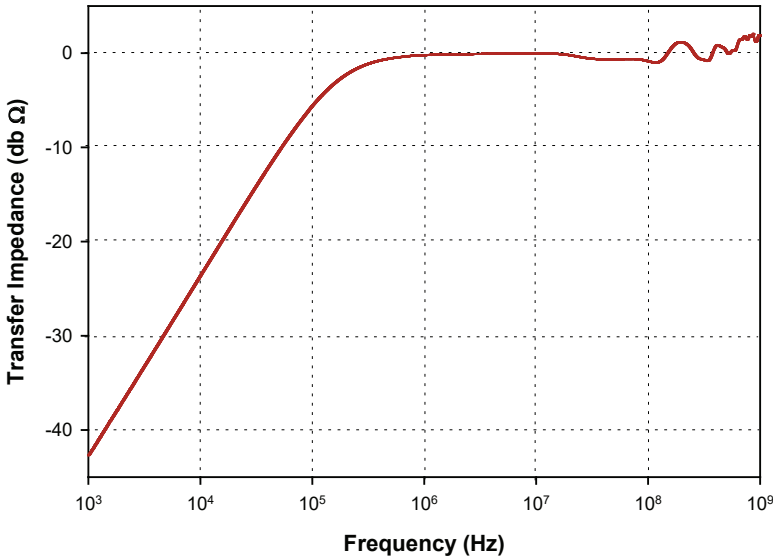
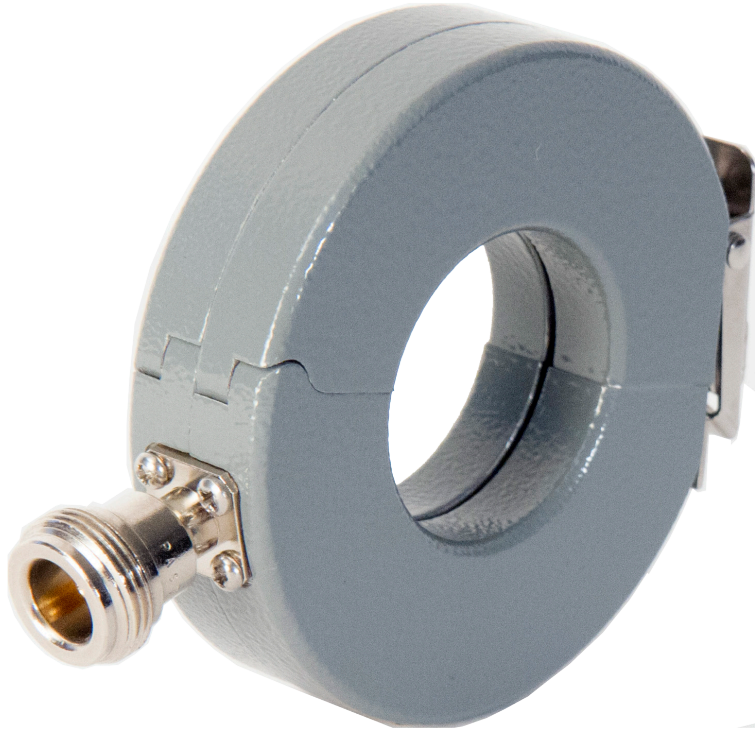


F-220114-1005-1

CURRENT PROBE

The F-220114-1005-1 is used to measure common mode currents from 10 kHz – 1 GHz. It is for laboratory use by properly trained RF technical personnel using best engineering practices.



Specifications

Frequency:	10 kHz – 1 GHz
Internal diameter:	32 mm
External diameter:	71 mm
Height:	19 mm
Transfer Impedance:	See Curve
Connector:	Type-N
DC to 400 Hz:	400 amperes
RF(CW):	3 amperes
Peak Pulse Current ¹ :	100 amperes

1: Depends upon the pulse width and pulse rep. rate.



Fischer Custom Communications, Inc.

19220 Normandie Ave., Unit B Torrance, CA 90502
Phone: 310-303-3300
Email: sales@fischercc.com

© Fischer Custom Communications, Inc.