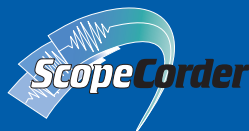
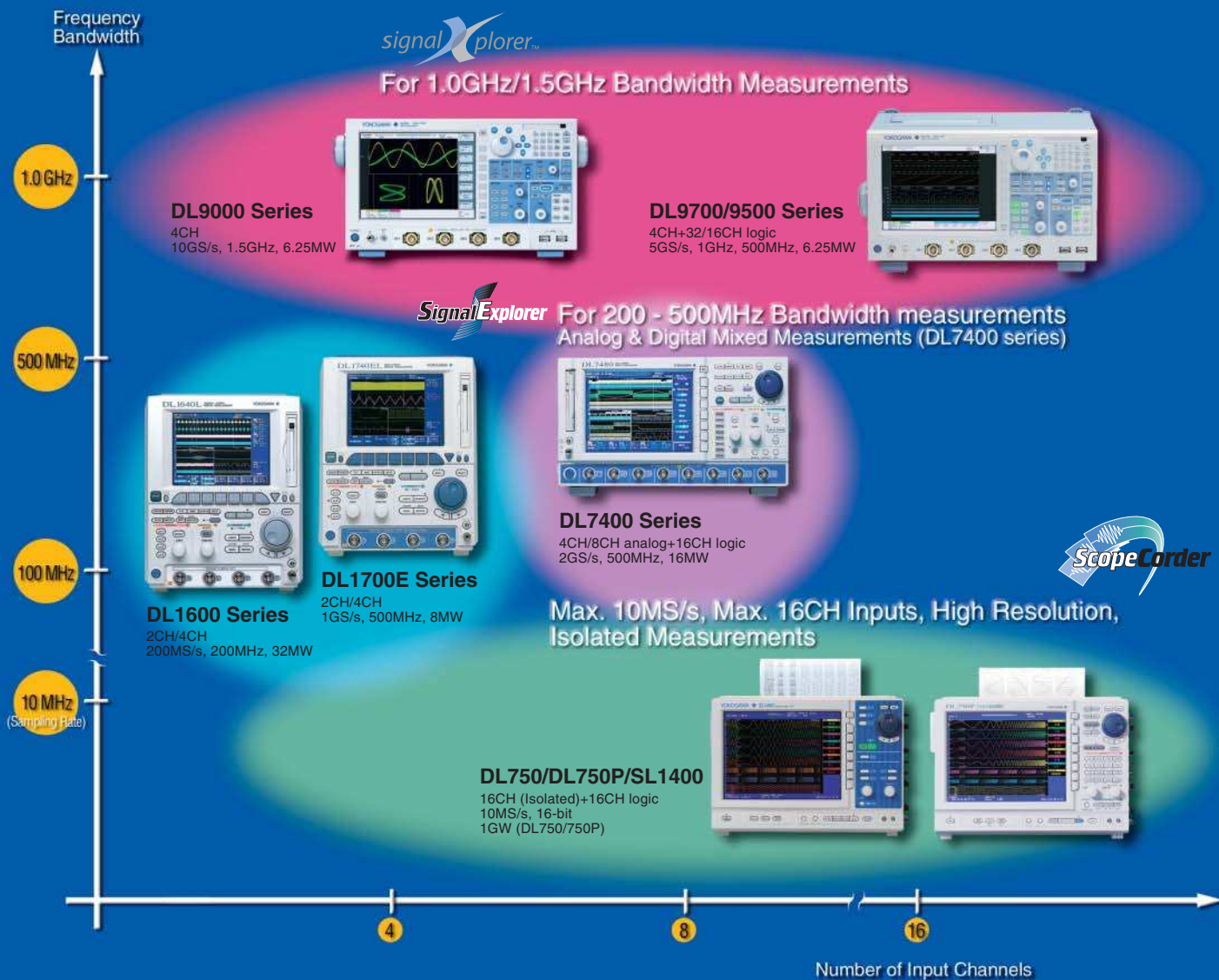


Digital Oscilloscopes and ScopeCorders



Yokogawa's DL series of instruments consists of digital oscilloscopes and hybrid ScopeCorders. The DL9000 series digital oscilloscopes have high-speed sampling and a wide range of bandwidths that can be utilized for design and development of electronic devices and embedded systems. The DL9700/9500 series Mixed Signal Oscilloscopes have 4 Analog channels and up to 32 logic channels. The DL1600 series oscilloscopes support 3-mode power supplies, and the weight is just 3.9kg. The ScopeCorders have the capabilities of both a powerful digital sampling oscilloscope and a multi-channel data recorder, and are a perfect fit for industrial, manufacturing, and maintenance environments. The DL series offers a wide range of capabilities designed to meet your current and future needs.

DL/SL Series Lineup



Select the "perfect" DL for your application

For full 1 GHz/1.5 GHz bandwidth measurements

▼ High performance and compact Mixed Signal Oscilloscope



DL9700/DL9500 Series

- Max. 5 GS/s
- 1 GHz (DL9710L, DL9510L) / 500 MHz (DL9705L, DL9505L) analog bandwidth
- Max. Record length 6.25 MW/CH
- 4 Analog channels + 32/16 Logic inputs
- Max. 2.5 M waveforms/sec/ch fast acquisition rate
- I²C, SPI, CAN and LIN bus analysis functions (optional)
- Power supply analysis function (optional)
- 8.4-inch color TFT LCD (XGA)
- Weight approximately 8 kg

Application Examples :Design and development of embedded devices
:Analog & Digital mixed-signal measurement
:Debugging of CPU control circuit

▼ Gigahertz-band digital oscilloscopes offer high performance and portability at an affordable price.



DL9000 Series

- Max. 10 GS/s (DL9240/DL9240L)
- 500 MHz (DL9040, DL9040L) / 1 GHz (DL9140, DL9140L) / 1.5 GHz (DL9240, DL9240L) analog bandwidth
- Max. Record length 2.5 MW/CH (DL9040, DL9140, DL9240) 6.25 MW/CH (DL9040L, DL9140L, DL9240L)
- Max. 2.5 M waveforms/sec/ch fast acquisition rate
- Compact and light weight, 18 cm (7.1") depth, 6.5 kg (14.5 lbs)
- I²C, SPI, CAN and LIN bus analysis functions (optional)
- 8.4-inch color TFT LCD (XGA)

Application Examples :Design and development of AV equipment, digital home electronics, mobile phones and other embedded devices

For 500 MHz bandwidth analog and digital mixed-signal measurements

▼ The DL7400 series is designed to make complex analog & digital measurements easily.



DL7400 Series

- Max. 2 GS/s
- 500 MHz analog bandwidth
- DL7440 4 CH analog inputs
- DL7480 8 CH analog inputs
- Max. 16 MW memory
- 8.4-inch color TFT LCD (VGA)
- 16-bit logic inputs
- Power analysis function (optional)
- I²C, CAN, SPI and FlexRay bus analysis functions (optional)

Application Examples :ASIC system design
:Software debugging for equipment controlled by a microcomputer.

For 200 - 500 MHz bandwidth measurements

▼ These compact, lightweight models offer high-speed sampling and long memory.



DL1700E Series

- Max. 1 GS/s
- 350 MHz, 500 MHz analog bandwidth
- DL1740E/EL 4CH analog inputs
- DL1720E 2CH analog inputs
- Max. 8MW memory
- 6.4-inch color TFT LCD (VGA)
- PC card interface or FDD (select one)
- Supports USB mass storage
- I²C and SPI bus analysis function (optional)

Application Examples :Production line for DVD manufacturing
:Evaluation of embedded systems controlled by I²C bus

▼ Our best-selling models support 3-mode power supplies, and weight just 3.9 kg.



*DL1640+Battery Box

DL1600 Series

- Max. 200MS/s
- 200MHz analog bandwidth
- DL1640/DL1640L 4 CH analog inputs
- DL1620 2 CH analog inputs
- Max. 32MW memory
- 6.4-inch color TFT LCD (VGA)
- Real-time digital filtering and high-resolution mode
- I²C, SPI and CAN bus analysis functions (optional)
- 3-mode power supplies (AC, DC12V, battery)
- Compact and lightweight, just 3.9 kg (base model)

Application Examples :Measurement of energy consumption of RFIC in mobile phone.
:CAN physical layer analysis for in-vehicle testing

Up to 10 MS/s sampling rate, max 16 CH inputs for various kinds of signals such as voltage, temperature, strain, frequency, etc.

▼ 11 different plug-in modules can be combined to meet a variety of measurements needs.



DL750/DL750P

- Max. 10 MS/s (using 701250 module)
- Max. 16-bit A/D resolution (using 701251, 701260 module)
- Max. analog 16-ch + logic 16-bit inputs
- Max. 1 GW memory
- 10.4-inch color TFT LCD (SVGA)
- 40 GB internal HDD (optional)
- Dual capture function
- 200 mm printing width high resolution A4 thermal printer (DL750P)
- DC12 V Power supplies available (DL750)

DL750/DL750P Plug-In Modules

Model No.	Description
701250	High-speed 10 MS/s 12-bit isolation module (2 CH)
701251	High-speed 1 MS/s 16-bit isolation module (2 CH)
701255	High-speed 10 MS/s 12-bit non-isolation module (2 CH)
701260	High-voltage 100 kS/s 16-bit isolation module (2 CH, with RMS)
701261	Universal Module (2 CH)
701262	Universal Module (with AAF, 2 CH)
701265	Temperature/high-Precision voltage module (2 CH)
701270	Strain module (NDIS, 2 CH)
701271	Strain module (DSUB, Shunt-CAL, 2 CH)
701275	Acceleration/Voltage module (with AAF, 2 CH)
701280	Frequency module (2 CH)

Application Examples :Automobiles (engine combustion pressure, brakes, transmission control signals)
:Motors, Inverters, Press machine, Hydraulic equipment, Printer...

▼ Easy operation and a perfect fit for manufacturing and maintenance departments



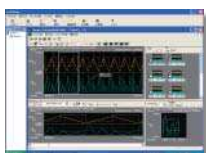
SL1400

- Max. 10 MS/s (using 701250 module)
- Max. 16-bit A/D resolution (using 701251, 701260 module)
- Max. analog 16-ch + logic 16-bit inputs
- Max. 50 MW memory
- Max. 16 Analog channels + 16 Logic input
- 10.4-inch color TFT LCD (SVGA)
- 40 GB internal HDD (optional)
- Dual capture function
- High resolution A4 thermal printer

Application Examples :Power supply quality measurement
:Steel plant maintenance, Power plant maintenance

Accessories

Xviewer (701992)



Xviewer is a PC software application designed to work with the DL series digital oscilloscopes and the DL750 series ScopeCorders. Xviewer allows you to display DL-acquired waveform data (using the "Viewer" function), perform file transfers, and control DL series instruments remotely.

You can download a trial version of Xviewer from YOKOGAWA's web site at:
<http://www.yokogawa.co.jp/tm/Bu/701992/>

USB Compliance Test Solution



A DL9240 or DL9240L together with the USB test fixture, test software and probes, allow you to test a USB device, host or hub for compliance to USB-IF specifications. The test software shows connection methods and test procedures in a wizard form for each test item. It shows connections, settings and operations necessary for carrying out each test enabling even first-time users to perform test easily. You can output waveform data from a test result window to analyze failed signals using the Xviewer waveform analysis software.

DL series • Selection Guide*1

Item	Model	DL9700L/DL9500L	DL9040/9140/9240	DL7400 series	DL1700E series	DL1600 series	DL750/DL750P	SL1400
Features		Analog 4 ch+Logic 32/16 bits input Max. 5 GS/s Serial bus analysis functions Power supply analysis functions "Virtual DA" functions Probe power connectors Supports USB storage USB mouse/keyboard	Fast screen update & all points display Compact & lightweight, 4 ch Max. 10 GS/s I ² C, SPI, CAN and LIN bus analysis functions Probe power connectors Supports USB storage USB mouse/keyboard Power supply analysis functions	Fast screen update & all points display High speed 8 ch + 16 bits logic input Max. 2 GS/s Web server function Serial bus analysis functions Power analysis functions USB mouse/keyboard Probe power connectors Supports USB storage FlexRay signal analyzer	Fast screen update & all points display Compact & lightweight, 4 ch Max. 1 GS/s I ² C, SPI bus analysis functions Probe power connectors Supports USB storage Web server functions USB mouse/keyboard	Fast screen update & all points display Compact 4 ch, 200 MS/s Max. 32 MW memory (4 ch) Max. 2 GS/s I ² C and SPI bus analysis functions Probe power connectors Supports USB storage	Compact, 16CH isolated inputs GigaZoomEngine /DualCapture Eleven different plug-in input modules Max. 1GW memory 200mm printing width high resolution A4 thermal printer (DL750P) Web server functions USB mouse/keyboard Probe power connectors	Compact, 16 ch isolated inputs (8 module slots) Eleven kinds of plug-in input modules Web server functions A4 (210 mm) big printer Probe power connectors
Max. Sampling Rate		5 GS/s	10 GS/s ⁽²⁾	2 GS/s	1 GS/s	200 MS/s	10 MS/s ⁽⁴⁾	10 MS/s ⁽⁴⁾
Bandwidth		1.0 GHz ⁽²⁾	1.5 GHz ⁽²⁾	500 MHz	500 MHz ⁽²⁾	200 MHz	3 MHz ⁽⁴⁾	3 MHz ⁽⁴⁾
Number of analog input channels		4	4	DL7440/7480: 4 ch / 8 ch	DL1720E/1735E, 40E, 40EL: 2 ch/4 ch	DL1620/1640/1640L: 2 ch/4 ch/4 ch	Plug-in module: 16 ch (isolated)	Plug-in module: 16 ch (isolation)
Logic Input		DL9705L, DL9710L: St'd:32 (8 bits × 4) DL9505L, DL9510L: St'd:16 (8 bits × 2)	-	St'd: 16-bit (8 bits × 2)	-	-	St'd: 16 (8 bits × 2)	St'd: 16 (8 bits × 2)
Max. vertical sensitivity (1:1)		2 mV/div	2 mV/div	2 mV/div	2 mV/div	2 mV/div	100 μV/div ⁽⁴⁾	1 mV range
Vertical axis resolution		8 bit	8 bit	8 bit	8 bit	8 bit	Max. 16 bits ⁽⁴⁾	Max. 16 bits ⁽⁴⁾
Max. sweep sensitivity		500 ps/div	500 ps/div	1 ns/div	1 ns/div	2 ns/div	500 ns/div ⁽⁴⁾	100 μs Setting
Max. record length	St'd	6.25 MW	DL9040, DL9140, DL9240: 2.5 MW DL9040L, DL9140L, DL9240L: 6.25 MW	701450/70: 4 MW 701460/80: 16 MW	DL1740EL: 8 MW DL1740E: 2 MW DL1735E: 2 MW DL1720E: 1 MW	DL1620/DL1640: 8 MW DL1640L: 32 MW	50 MW max/ 2.5 MW (16 ch)	50 MW max/ 2.5 MW (16 ch)
Option		-	-	-	-	-	1 GW max/50 MW (16 ch)	-
Internal Media drive	St'd	PC card (2)	PC card	PC card	-	-	-	-
selectable		-	-	FDD, Zip [®]	FDD, PC card	PC card, FDD, Zip [®]	PC card, FDD, Zip [®] (DL750 only)	PC card
Internal HDD	Optional	40 GB (FAT32)	40 GB (FAT32)	-	-	-	40 GB (FAT32)	40 GB (FAT32)
Interface	St'd	USB	USB	USB/GP-IB	USB/GP-IB	RS232	USB/GP-IB/RS232/SCSI	USB/GP-IB/RS232/SCSI
Optional		Ethernet	Ethernet	Ethernet/SCSI	Ethernet	USB/Ethernet/GP-IB	Ethernet	Ethernet
Internal printer	St'd / Optional	Optional: 112 mm width	Optional: 112 mm width	Optional: 112 mm width	Optional: 112 mm width	Optional: 112 mm width	St'd 112mm width (DL750) St'd 210mm width (DL750P)	St'd 210 mm width
Others	Optional	I ² C bus analysis SPI bus analysis CAN & LIN bus analysis Probe power connectors Power supply analysis functions User define math functions	I ² C bus analysis SPI bus analysis CAN & LIN bus analysis Probe power connectors	I ² C bus analysis CAN bus analysis SPI bus analysis User-defined math functions Power analysis Four additional probe power (total: 8, DL7480 only) ⁽³⁾ FlexRay bus analysis	I ² C bus analysis SPI bus analysis 2/4 output probe power connectors	I ² C bus analysis CAN bus analysis SPI bus analysis User-defined math functions 4 Probe power connectors DC12V drive model available (DL750)	Eleven kinds of plug-in modules 6 DSP channel User-defined math functions 4 Probe power connectors DC12V drive model available (DL750)	Eleven kinds of plug-in modules 4 Probe power connectors
Display (TFT LCD)		8.4-inch color, XGA	8.4-inch color, XGA	8.4-inch color, VGA	6.4-inch color, VGA	6.4-inch color, VGA	10.4-inch color, SVGA	10.4-inch color, SVGA
External Dimensions W × H × D (mm)		350 × 200 × 285	350 × 200 × 178	373 × 210.5 × 355.3	220 × 266 × 264	220 × 266 × 224	355 × 250 × 180 (DL750) 355 × 250 × 225 (DL750P)	355 × 250 × 225
Approx. Weight (kg)		Approx. 7.7	Approx. 6.5	Approx. 10	Approx. 5.5	Approx. 3.9	6.6 (DL750 ⁽⁵⁾), 7.9 (DL750P ⁽⁵⁾)	Approx. 8.0 ⁽⁵⁾

*1: See each product catalog for more detailed specifications
*2: Depends on model

*3: The DL7400 series comes standard with four probe power connectors.
*4: Depends on input module

*5: Plug-in modules are not included

Model and Suffix Codes of DL9000 series MSO models

Model	Suffix Code	Description
701320		DL9505L: 4ch 500MHz + Logic 16bits Max. 5 GS/s (2.5 GS/s/ch), 6.25 MW/ch
701321		DL9510L: 4ch 1GHz + Logic 16bits Max. 5 GS/s (2.5 GS/s/ch), 6.25 MW/ch
701330		DL9705L: 4ch 500MHz + Logic 32bits Max. 5 GS/s (2.5 GS/s/ch), 6.25 MW/ch
701331		DL9710L: 4ch 1GHz + Logic 32bits Max. 5 GS/s (2.5 GS/s/ch), 6.25 MW/ch
Power Cable	-D	UL/CSA standard
	-F	VDE standard
	-Q	BS standard
	-R	AS standard
	-H	GB standard
Help menu language	+HE	English Help
Logic Probe	-L0	No Logic Probe attached
	-L2	Attach two 250 MHz Logic Probes (701981)
	-L4 ¹	Attach four 250 MHz Logic Probes (701981)
Options	/BS	Built-in printer
	/P4 ²	4 Probe power connections on rear panel
	/CB ³	Built-in HDD + Ethernet interface
	/C10 ³	Ethernet interface
	/G2 ⁴	User-defined math function
	/G4 ⁴	Power Supply Analysis Function
	/F5 ⁵	PC+SPI bus analyzer
	/F7 ⁵	CAN+LIN+SPI bus analyzer
	/F6 ⁵	PC+CAN+LIN+SPI bus analyzer

- 1: Not available for DL9500 series
- 2: Please order /P4 option if you use either current probes or differential probes such as 701920, 701922.
- 3: Choose either one
- 4: Choose either one
- 5: Choose either one. /C, CAN, LIN and SPI triggers are standard.

Model and Suffix Codes of DL9040/9140/9240

Model	Suffix Code	Description
701307		DL9040 digital oscilloscope 500 MHz max. 5 GS/s (2.5 GS/s/ch), 2.5 Mword/ch
701308		DL9040L digital oscilloscope 500 MHz max. 5 GS/s (2.5 GS/s/ch), 6.25 Mword/ch
701310		DL9140 digital oscilloscope 1 GHz max. 5 GS/s (2.5 GS/s/ch), 2.5 Mword/ch
701311		DL9140L digital oscilloscope 1 GHz max. 5 GS/s (2.5 GS/s/ch), 6.25 Mword/ch
701312		DL9240 digital oscilloscope 1.5 GHz max. 10 GS/s (5 GS/s/ch), 2.5 Mword/ch
701313		DL9240L digital oscilloscope 1.5 GHz max. 10 GS/s (5 GS/s/ch), 6.25 Mword/ch
Power cable	-D	UL/CSA standard
	-F	VDE standard
	-Q	BS standard
	-R	AS standard
	-H	GB standard
Help menu language	-HE	English Help
	-HC	Chinese Help
	-HK	Korean Help
Options	/BS	Built-in printer
	/P2 ¹	Probe power connections on rear panel (2 outputs for 900 MHz FET probe and current probe)
	/CB ²	Built-in hard disk + Ethernet interface
	/C10 ²	Ethernet interface
	/F5 ³	PC + SPI bus analyzer
	/F7 ³	CAN + SPI bus analyzer
	/F8 ³	PC + CAN + SPI bus analyzer

- 1: Please specify this /P2 option if you use either current probes or differential probes such as 701920 or 701922.
- 2: Choose either one.
- 3: Choose either one. /C, CAN and SPI bus signal triggers are standard.

DL7400/DL7480 Model Numbers and Suffix Codes

Model	Suffix Code	Description
701450		DL7440 with 4 CH input and maximum 4 MW memory
701460		DL7440 with 4 CH input and maximum 16 MW memory
701470		DL7480 with 8 CH input and maximum 4 MW memory
701480		DL7480 with 8 CH input and maximum 16 MW memory
Power cable	-D	UL/CSA standard
	-F	VDE standard
	-Q	BS standard
	-R	AS standard
	-H	GB standard
Internal storage drive	-J1	Floppy disk drive ¹
	-J2	Zip [®] drive ¹
Options	/E4	Four additional passive probes (701470, 701480 only) ²
	/EX4	Attach four 701941 probes ^{2,3}
	/EA4	Add four 701941 probes ^{2,3}
	/P4	Four additional probe power connectors (701470, 701480 only) ³
	/N3	Logic input for 701450/701470 ⁴ (Standard option)
	/N4	Logic input for 701460/701480 ⁴ (Standard option)
	/C7	SCSI interface
	/C10	Ethernet interface
	/G2	User-defined math function ⁵
	/G4	Power Supply Analysis Function ⁵
/F5	PC + SPI Bus Analyzer ⁶	
/F7	CAN + SPI Bus Analyzer ⁶	
/F8	PC + CAN + SPI Bus Analyzer ⁶	
/F9	FlexRay Signal Analyzer	

- 1: Select one only.
- 2: The DL7400 Series is equipped with four passive probes (700988) as standard.
- 3: The DL7400 Series is equipped with four probe power connectors as standard.
- 4: Select /N3 for models 701450 and 701470, and /N4 for models 701460 and 701480. Logic probes are sold separately. These options can be installed free of charge.
- 5: /G2 and /G4 cannot be ordered together. /G4 includes /G2.
- 6: Option /F5, /F7, and /F8 cannot be specified together. Select one only.
- 7: The SPI Bus Analysis and Search functions are standard features. The SPI Bus Triggers are only available as an option.
- 8: This option can be specified with model 701470, 701480 only.
- 9: When the option /E4 is specified, neither /EX4 nor /EA4 can be specified together.

CAUTION



• Read the product manual before using this product to ensure safe use.

NOTICE

- Before operating the product, read the instruction manual thoroughly for proper and safe operation.
- If this product is for use with a system requiring safeguards that directly involve personnel safety, please contact the Yokogawa sales offices.

DL1720E, DL1735E, DL1740E, DL1740EL Model Number and Suffix Codes

Model	Suffix Code	Description
701715		DL1720E digital oscilloscope with 2 ch input, 500MHz analog bandwidth and maximum 1 MW memory
701725		DL1735E digital oscilloscope with 4 ch input, 350MHz analog bandwidth and maximum 2 MW memory
701730		DL1740E digital oscilloscope with 4 ch input 500MHz analog bandwidth and maximum 2 MW memory
701740		DL1740EL digital oscilloscope with 4 ch input 500MHz analog bandwidth and maximum 8 MW memory
Power cable	-D	UL and CSA standard
	-F	VDE standard
	-Q	BS standard
	-R	AS standard
	-H	GB standard
Internal storage drive	-J1	Floppy disk drive ¹
	-J3	PC card interface (Type II) ¹
Options	/BS	Built-in printer
	/P2	Probe power for model 701715 ²
	/P4	Probe power for models 701725, 701730 and 701740 ²
	/C10	Ethernet interface
	/F5	PC + SPI bus analysis function ³
	/EX2	Attach two 701941 probes ⁴
	/EX4	Attach four 701941 probes ⁴

The instrument comes standard with passive probes (700988). Four probes are included with the 701730 and 701740, and two probes are included with the 701715.

- 1: One or the other must be selected.
- 2: Select /P2 for model 701715, or /P4 for models 701725, 701730 and 701740.
- 3: Option for models 701725, 701730 and 701740 only.
- 4: Option for model 701715 only. The 700988 probes are not included when this option is specified.
- 5: Option for models 701725, 701730, 701740 only. The 700988 probes are not included when this option is specified.

DL1620/DL1640/DL1640L Model Numbers and Suffix Codes

Model/Options	Suffix code	Description
701605		DL1620 digital oscilloscope
701610		DL1640 digital oscilloscope
701620		DL1640L digital oscilloscope
Power cable	-AC	100-120 V & 220-240 V
	-DC1	12 VDC
	-D	UL/CSA standard
	-F	VDE standard
	-Q	BS standard
	-R	AS standard
	-H	GB standard
Internal media drive	-Y	No power cable
	-J1	Floppy drive ²
	-J2	Zip [®] drive ²
Other options	-J3	PC card drive (Type II) ²
	/BS	Built-in printer
	/P2	Probe power for 701605
	/P4	Probe power for 701610 and 701620
	/C1	GP-IB + USB ³
/C10	Ethernet + USB ³	
/F5	PC bus analysis function ⁴	
/F7	CAN bus analysis function ⁵	

- The main unit comes standard with four passive probes (700960) for 701610/701620 and two passive probes for 701605.
- 1: Select "-Y" for the DC power model. Available only for model 701610 and 701620.
 - 2: Choose one.
 - 3: Choose one.
 - 4: The PC bus analysis function (/F5) includes the SPI analysis function. This option only be specified for model 701610 and 701620.
 - 5: The CAN bus analysis function (/F7) includes the SPI analysis function. This option only be specified for model 701610 and 701620.

DL750/DL750P Model Numbers and Suffix Codes

Model	Suffix Code	Description
701210		DL750 main unit (16 isolated channels Slots + 16-bit logic) 112 mm width A6 thermal printer built-in
701230		DL750P main unit (16 isolated channels Slots + 16-bit logic) 210 mm width A4 thermal printer built-in
Power cable	-D	UL/CSA standard
	-F	VDE standard
	-R	AS standard
	-Q	BS standard
	-H	GB standard (Complied with CCC)
Internal media drive ²	-J1	Floppy drive
	-J2	Zip [®] drive (available for the DL750 only) ³
	-J3	PC card drive
Default Help language	-HE	English online help
	-HJ	Japanese online help
	-HC	Chinese online help
	-HG	German online help
	-HF	French online help
	-HL	Italian online help
Memory expansion	-HK	Korean online help
	/M1	Memory expansion to 10 MW/CH ⁴
	/M2	Memory expansion to 25 MW/CH ⁴
	/M3	Memory expansion to 50 MW/CH ⁴
Other specifications	/C8	Internal 40 GB hard drive (FAT32)
	/C10	Ethernet interface
	/G2	User-defined math function
	/G3	DSP channel function
	/P4	Probe power (4-output)
/DC	DC12 V power (DC10-18 V) (DL750 only) ³	

- 1: Plug-in modules are not included.
- 2: Choose only one.
- 3: Zip[®] drive and DC12V power supply cannot be specified together with the DL750P.
- 4: Cannot be specified together.

SL1400 Model Numbers and Suffix Codes

Model	Suffix Code	Description
701240		SL1400 main unit (16 isolated Channel, 8 slots + 16-bit logic) ¹ 210 mm width A4 thermal printer built-in
Power cable ²	-D	UL/CSA standard
	-F	VDE standard
	-R	AS standard
	-Q	BS standard
	-H	GB standard (Complied with CCC)
Internal media drive ²	-J0	non drive
	-J3	PC card drive
Language ²	-HE	English, English Panel
	-HJ	Japanese, Japanese Panel
	-HC	Chinese, English Panel
	-HG	German, English Panel
	-HF	French, English Panel
	-HL	Italian, English Panel
	-HK	Korean, English Panel
-HS	Spanish, English Panel	
Other specifications	/C8	Internal 40 GB hard drive (FAT32)
	/C10	Ethernet interface
	/P4	Probe power (4-output)

- 1: Plug-in modules are not included.
- 2: Choose only one.



YOKOGAWA ELECTRIC CORPORATION
 Communication & Measurement Business Headquarters /Phone: (81)-422-52-6768, Fax: (81)-422-52-6624
 E-mail: tm@cs.jp.yokogawa.com

YOKOGAWA CORPORATION OF AMERICA Phone: (1)-770-253-7000, Fax: (1)-770-251-6427
YOKOGAWA EUROPE B.V. Phone: (31)-33-4641858, Fax: (31)-33-4641859
YOKOGAWA ENGINEERING ASIA PTE. LTD. Phone: (65)-62419933, Fax: (65)-62412606

Subject to change without notice.
 [Ed : 05/b] Copyright ©1998
 Printed in Japan, 710(KP)

Test Equipment CONNECTION 400 + Manufacturers
40,000 + Products

YOUR SINGLE SOURCE TEST & MEASUREMENT SOLUTION

NEW & USED TEST EQUIPMENT

- Rent Equipment
- Sell Equipment
- Lease Equipment
- Trade-In Equipment

Spectrum analyzers • Mobile phone testers • Oscilloscopes
Network analyzers • Service monitors • OTDR
• Multimeters - at great savings!

www.testequipmentconnection.com

Sales@Testequipmentconnection.com

USA Voice: (800) 615-8378

Voice Direct: (407) 804-1299

Skype: TestEquipmentConnection

Test Equipment Connection Corporation is your single source test & measurement solution. We offer over 400 test equipment manufacturers including Agilent, Tektronix, Anritsu, Rohde & Schwarz, Advantest, Megger, LeCroy, Chroma and Fluke, plus thousands of New, Used, Second Hand, Pre-Owned, Demo, Refurbished, and Reconditioned test equipment products.

For over 18 years, we have been providing high quality spectrum analyzers, mobile phone testers, oscilloscopes, network analyzers, service monitors, RF amplifiers, broadband amplifiers, signal generators, OTDR, fusion splicers, and digital multimeters at great savings to over 200,000 customers worldwide. Lease or rent from us, and we can help manage your idle assets using our consignment program. Trade in underutilized test equipment for cash or credit towards the test solutions you need today! TEC offers repair and calibration support for thousands of current and discontinued brands. TEC's GSA Contract #GS-07F-0358U provides lower cost test and measurement equipment to qualifying government contractors and agencies.

www.TestEquipmentConnection.com

<p>Americas USA & Canada:(800) 615-8378 Florida:(407) 804-1299 Mexico: 52-55-8421-4127 Chile: 2-897-4335 Brazil:301-32793 Fax: 800-819-8378 / 407-804-1277 Skype: TestEquipmentConnection</p> <p>Test Equipment Connection Corporation 30 Skyline Drive Lake Mary, FL 32746 USA</p>	<p>Europe United Kingdom: 20-8144-7837 Ireland: 1-442-8376 Sweden: 46-46-288-61-42 Denmark: 369-92915 Finland: 358-9-2316-3837 Belgium: +32 (2)808 0820</p> <p>Test Equipment Connection Europe S.P.R.L. Levels 20, Bastion Tower 5 Place du Champ de Mars B-1050 Brussels</p>	<p>Asia/Pacific China: 86-136-3217-2095 Hong Kong: 852-2690-1360 Singapore: 65-6320-8596 Australia: 61-2-8011-3687 Skype: TEConnectionAsia</p> <p>TE Connection Asia, Ltd. Unit E4, 7/F., Phase I, Kaiser Estate, No. 41 Man Yue Street Kowloon, Hong Kong.</p> <p>Test Equipment Connection Pte. Ltd. 6 Battery Road #31-00 Standard Chartered Bank Building Singapore 049909</p>
---	--	---



[Click Here to Request an Offer on Your Surplus Test and Measurement Assets Today](#)