



CTP 6099 ANTENNA TRIPOD



CTP 6099

- Ideal for outdoor applications
- Easy height adjustment and transportability
- High stability
- Wide application range

The CTP 6099 tripod is ideal for outdoor applications and use on soft ground. It has been designed for the loop antenna HLA 6120 and can be used with the optionally available adapters for other antennas (see next page).

Technical specifications

Height variation:	1.02 to 1.65 m
Tripod head window:	Ø 55 mm
Mounting thread:	5/8 UNEF
Weight:	8 kg
Length for transportation:	1.09 m
Dimension of the packaging:	1.14 m x 0.22 m x 0.24 m

Delivery information

Part number	Description
348-053	CTP 6099 Tripod (special for outdoor applications), suitable for HLA 6120
348-100	CAS 6000 Tripod set, includes tripod CTP 6099, cable 10 m BNC(m)-BNC(m), adapter N(m)-BNC(f) and transit case, suitable for HLA 6120
348-102	CAS 6002 Tripod set, includes tripod CTP 6099, cable 10 m BNC(m)-BNC(m), 10 m N(m)-N(m), adapter N(m)-BNC(f), glasfiber tubes with 1 m and 105 mm CAS 6021 and 6022, CAS 6020 mast top, mounting head CAS 6023 and transit case
348-112	CAS 6012 Tripod set, includes tripod CTP 6099, cable 10 m BNC(m)-BNC(m), 10 m N(m)-N(m), adapter N(m)-BNC(f), glasfiber tubes with 1 m and 105 mm CAS 6021 and 6022, CAS 6020 mast top and mounting head CAS 6023
348-115	CAS 6015 Tripod set, includes tripod CTP 6099, glasfiber tubes with 1 m and 105 mm CAS 6021 and 6022, CAS 6020 mast top and mounting head CAS 6023



CTP 6099, view to the mounting head

Teseq GmbH
Landsberger Str. 255 12623 Berlin Germany
T +49 30 56 59 88 35 F +49 30 56 59 88 34
desales@teseql.com www.teseq.com



Advanced Test Solutions for EMC

Antenna
HLA 6120

Antennas with
Ø 22 mm tube
(CBL 6111, 6112,
6141, 6143, UPA
6108, 6109, VBA
6106, VDA 6116A,
UHA 9105)

Antennas with
Ø 25.4 mm tube
(BSRD 6500)

Alternative for
antennas with
1/2" four cor-
nered shaft

Joins together
fiberglass poles
from CAS 6xxx
series tripods

Field probes and
antennas fitted
with 1/4 " cam-
era thread
(BHA 9118)

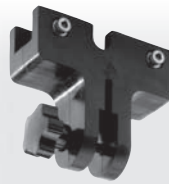
CAS 6020



CHA 9432



CHA 9426



CHA 9427



CHA 9429



CAS 6021 & CAS 6022*



CAS 6023



CHA 9443



CTP 6099



* CAS 6021 glasfiber tube with 1 m length
CAS 6022 glasfiber tube with 105 mm length