



U.S. Patents: 6,744,259, 6,549,385, 6,515,484, 6,054,865, 5,548,501.

HYPOT® III



Production Line Dielectric Withstand Testers

Model 3705

5KV AC Hipot Tester

Model 3765

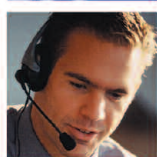
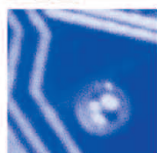
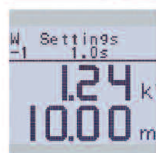
5KV AC, 6KV DC Hipot Tester

Model 3770

5KV AC, 6KV DC Hipot & Insulation Resistance Tester

Features and Benefits

- RS-232 interface standard for entry-level automation
- Patented SmartGFI® safety circuit protects the operator from shock hazards
- Patented VERI-CHEK® feature prompts users through steps to validate the instrument's operation
- Patented CAL-ALERT® feature alerts the operator that the tester is due for re-calibration
- Built-in adjustable Continuity test for checking basic continuity
- Graphic LCD provides intuitive menu system to simplify the entire testing process from set-up to results
- Remote Safety Interlock feature prevents the high-voltage from being activated without the interlock enabled
- 10 Memories with 3 Steps per memory for storing and recalling test parameters
- PLC Remote Control allows operators to remotely control the Hipot tester
- Interconnects with an Associated Research Ground Bond tester to form a complete test system
- Digitally controlled arc detection circuit allows the operator to program sensitivity levels for detecting arcs
- Minimum and maximum trip settings for safer and more accurate testing
- Comes complete with an adapter box for products terminated in a line cord



www.asresearch.com
1.800.858.TEST [8378]

Input Specifications

Voltage	115/230 VAC \pm 10%, user selectable
Frequency	50/60 Hz \pm 5%
Fuse	3.15 A, fast acting 250 VAC

Dielectric Withstand Test Mode

Output Rating	5000 V @ 20 mA AC 6000 V @ 7.5 mA DC
Voltage Setting	Range: 0 - 5.00 KV AC 0 - 6.00 KV DC Resolution: 0.01 KV Accuracy: \pm (2% of setting + 5 V)
Maximum Limit	AC Range: 0.00 - 20.00 mA Resolution: 0.01 mA DC Range: 0 - 7500 μ A Resolution: 1 μ A Accuracy: AC and DC \pm (2% of setting + 2 counts)
Minimum Limit	AC Range: 0.000 - 9.999 mA Resolution: 0.001 mA DC Range: 0.0 - 999.9 μ A Resolution: 0.1 μ A Accuracy: AC and DC \pm (2% of setting + 2 counts)
Arc Detection	Range: 0 - 9, 0 disabled
Ground Fault Interrupt	GFI Trip Current: 450 μ A max (AC or DC) HV Shut Down Speed: < 1ms
Current Display	Auto Range AC Range 1: 0.000 - 3.500 mA Range 2: 3.00 - 20.00 mA DC Range 1: 0.0 μ A - 350.0 μ A Range 2: 0.300 mA - 3.500 mA Range 3: 3.00 mA - 7.50 mA All Ranges \pm (2% of reading + 2 counts)
DC Output Ripple	\leq 5% Ripple RMS at 6 KV DC @ 7.5 mA, Resistive Load
Discharge Time	\leq 200 ms The maximum capacitive load vs output voltage: 0.20 μ F < 1 KV 0.050 μ F < 4 KV 0.10 μ F < 2 KV 0.040 μ F < 5 KV 0.06 μ F < 3 KV 0.015 μ F < 6 KV
AC Voltage Waveform	Sine Wave, Crest Factor = 1.3 - 1.5
Output Frequency	Range: 50 or 60 HZ, User Selectable
Output Voltage Regulation	\pm (1% of output + 5 V) from no load to full load and over input voltage range.
Dwell Timer	Range: AC 0, 0.3 - 999.9 sec (0 = Constant) DC 0, 0.4 - 999.9 sec (0 = Constant) Accuracy: \pm (0.1% of reading + 0.05 sec)
Ramp Timer	Range: Ramp-Up: 0.1 - 999.9 sec Ramp-Down: AC 0.0 - 999.9 sec DC 1.0 - 999.9 sec (0=OFF) Accuracy: \pm (0.1% of reading + 0.05 sec)
Ground Continuity Current	DC 0.1 A \pm 0.01 A, fixed
Ground Continuity	Range: 0.0 Ω - 1.50 Ω Resolution: 0.01 Ω Accuracy: \pm (3% of setting + 0.02 Ω)
Maximum Limit	
Minimum Limit	
Ground Continuity	Range: 0.0 Ω - 0.50 Ω Resolution: 0.01 Ω Accuracy: \pm (3% of setting + 0.02 Ω)
Auto Offset	

Insulation Resistance Test Mode

Voltage Setting	Range: 30 - 1000 VDC Accuracy: \pm (2% of setting + 5 V)
Resistance Display	Range: 1 - 9999 M Ω (4 Digit, Auto Ranging) Resolution: 500 VDC - 1000 VDC M Ω M Ω 0.001 1.000 - 9.999 0.01 10.00 - 99.99 0.1 100.0 - 999.9 1 1000 - 9999 Accuracy: \pm (2% of reading + 2 counts) at test voltage 500 - 1000 V and 1 - 999.9 M Ω \pm (5% of reading + 2 counts) at test voltage 500 - 1000 V and 1000 - 9999 M Ω \pm (8% of reading + 2 counts) at test voltage 30 - 500 V and 1 - 1000 M Ω
Maximum Limit	Range: 0, 1 - 9999 M Ω (0=OFF) Accuracy: Same as Resistance Display
Minimum Limit	Range: 1 - 9999 M Ω Accuracy: Same as Resistance Display
Ramp Timer	Range: Ramp-Up: 0.1 - 999.9 sec Ramp-Down: 1.0 - 999.9 sec (0=OFF) Accuracy: \pm (0.1% of reading + 0.05 sec)
Delay Timer	Range: 0, 0.5 - 999.9 sec (0 = Constant) Accuracy: \pm (0.1% of reading + 0.05 sec)
Ground Fault Interrupt	GFI Trip Current: 450 μ A max HV Shut Down Speed: < 1 ms

General Specifications

Interface	RS-232 interface standard for entry-level automation.
Remote Control & Signal Output	The following input and output signals are provided through two 9 pin D type connectors: 1. Remote control: Test, Reset, and Remote Interlock 2. Remote recall of memory program #1, #2, and #3 3. Outputs: Pass, Fail, Test-in-process, and Reset 10 Memories, 3 steps per memory.
Program Memory	Key Lock capability to avoid unauthorized access to all test parameters and memory locations.
Security	Bench or rack mount with tilt up feet.
Mechanical	(W x H x D) 8.46 x 3.5 x 14.57 in. (215 x 89 x 370 mm)
Dimensions	20.96 lbs (9.53 kgs)
Weight	Traceable to National Institute of Standards & Technology (NIST). Calibration controlled by software.
Calibration	Adjustments are made through front panel keypad in a restricted access calibration mode. Calibration information stored in non-volatile memory.

Available Accessories

Probe (38081)	High voltage retractable 5 KV AC probe.
Return Probe (38082)	Retractable probe used on the return side of the Hypot III.
Safe-T-Probe (38814)	Test Gun with trigger that controls retractable probe and activates the instrument's high voltage circuit.
Footswitch (35822)	Interlocked footswitch that provides a "hands-off" remote start.

Specifications subject to change without notice.



ASSOCIATED RESEARCH, INC.[®]
www.asresearch.com
1.800.858.TEST [8378]

- Customer support & technical services
- 5-Year extended warranty*
- 24-Hour turn-around on calibrations
- Industry seminars, expert training & education programs
- Local sales offices throughout the world

*With annual calibration from Associated Research.